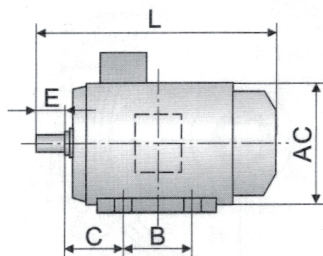


SDF

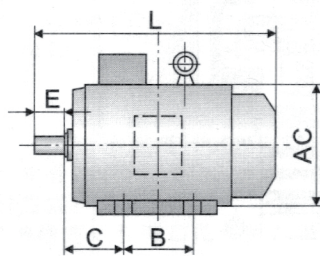
SERIE

COTAS Y MEDIDAS DE LOS MOTORES TRIFÁSICOS BLACK THUNDER
DE LA SERIE SDF DE FUNDICIÓN GRIS (HIERRO)
TIPO B3 (PATAS) DESDE EL TAMAÑO 63 HASTA EL 355L



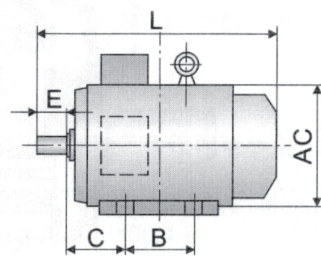
H63~90

B3

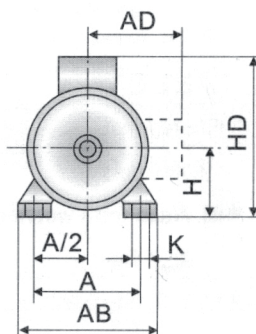
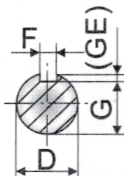
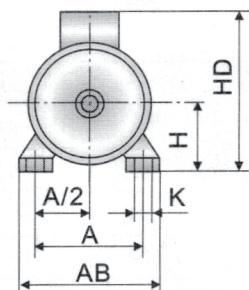


H100~132

B3



H160~355



TAMAÑO DE MOTOR	Nº DE POLOS	DIMENSIONES DE MONTAJE										DIMENSIONES GENERALES				
		A	A/2	B	C	D	E	F	G	H	K	AB	AC	AD	HD	L
SDF63	2 - 4	100	50	80	40	11	23	4	8,5	63	7	135	130	70	180	225
SDF71	2 - 4 - 6	112	56	90	45	14	30	5	11	71		150	145	80	195	250
SDF80	2 - 4 - 6 - 8	125	62,5	100	50	19	40	6	15,5	80	10	165	175	145	214	295
SDF90S		140	70	100	56	24	50	8	20	90		180	195	155	250	315
SDF90L				125												340
SDF100L		160	80	140	63	28	60	24	100	112	12	205	215	180	270	385
SDF112M		190	95	140	70							230	240	190	300	400
SDF132M		216	108	140	89	38	80	10	33	132	15	270	275	210	345	470
SDF132S				178												510
SDF160M		254	127	210	89	42	110	12	37	160	19	320	330	255	420	615
SDF160L				254												670
SDF180M		279	139,5	241	121	48	140	14	42,5	180	24	355	380	280	455	700
SDF180L				279												740
SDF200L	4 - 8	318	159	305	133	55	140	16	49	200	19	395	420	305	545	770
SDF225S		356	178	286	149	60		140	18	53		225	24	435	470	335
SDF225M	2			311		55	110	16	49	820						
SDF250M	4 - 6 - 8	406	203	349	168	60	140	18	53	250	28	490	510	370	615	910
	2					58			985							
SDF280S	2	457	228,5	368	190	75	140	20	67,5	280	24	550	580	410	680	1035
SDF280M	4 - 6 - 8															65
	2			419		75		20	67,5							
SDF315S	2	508	254	406	216	65	170	18	58	315	28	635	645	530	845	1160
	4 - 6 - 8 - 10					80		22	71							1270
SDF315M	2			65		140		18	58							1190
	4 - 6 - 8 - 10			80		170		22	71							1300
SDF315L	2			508		65		140	18							58
	4 - 8				80	170		22	71	1300						
SDF355M	2	610	305	560	254	75	140	20	67,5	355	28	730	710	655	1010	1500
	4 - 6 - 8 - 10					95	170	25	86							1530
SDF355L	2			630		75	140	20	67,5							1500
	4 - 6 - 8 - 10					95	170	25	86							1530